



# CEPRES National Transformation Engine (CNTTE)

The Development Arm of CEPRES International University.

From Education to Economic Transformation:  
A unified operating system for human capital,  
food security, health, and economic growth.

# The Macro-Paradox of Global Development

## The Diagnosis

Policies exist. Funding exists. Programs exist. Yet, massive developmental capital fails to reach the hyper-local ground level due to systemic friction.

### Education:

Free schooling policies fail without physical access or flexible placement.

### Healthcare:

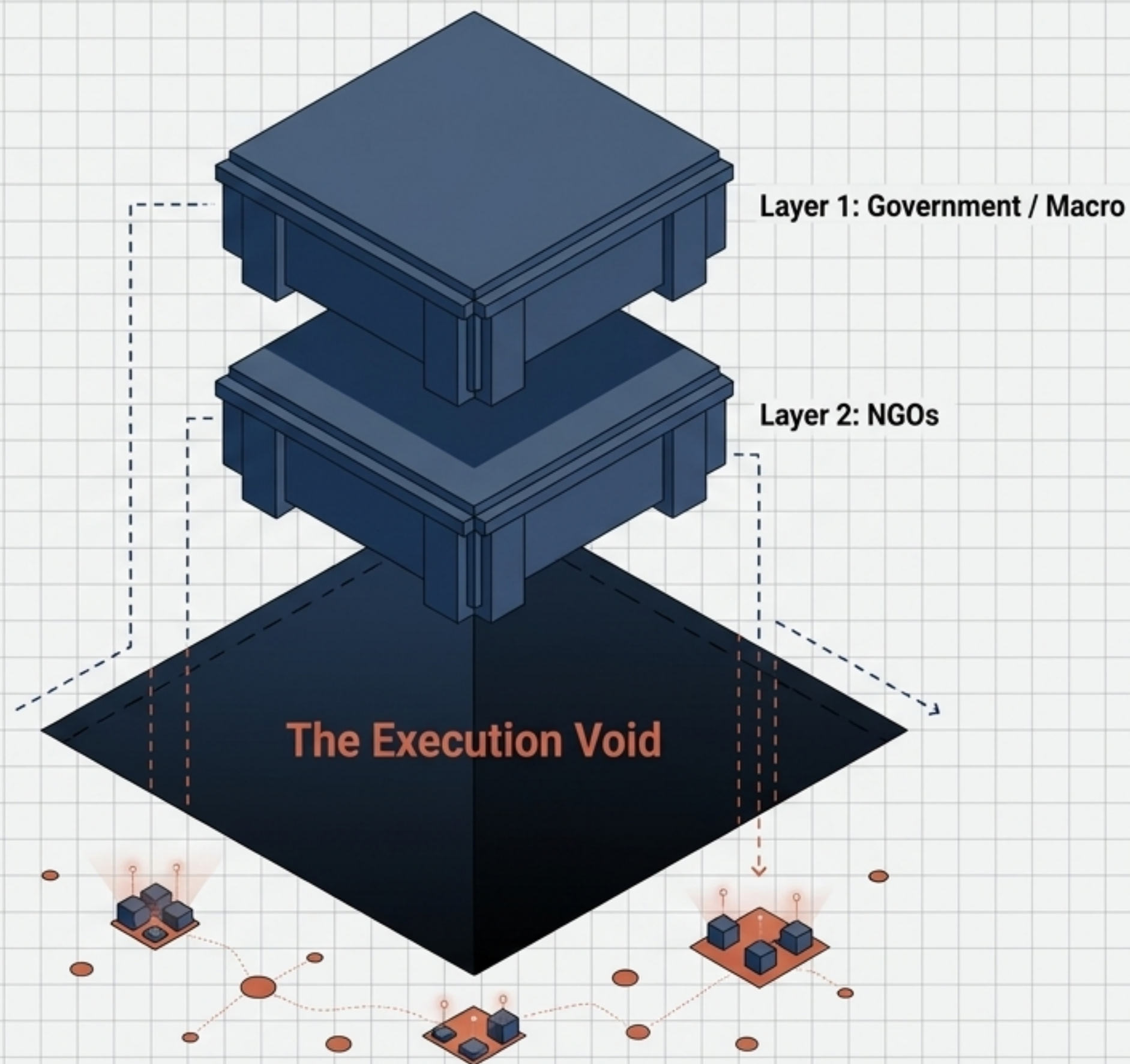
Eliminating consultation fees ignores devastating hidden transit costs.

### Agriculture:

High-level state research cannot reach isolated subsistence farmers.

### Enterprise:

Massive entrepreneurial energy is trapped in uncoordinated survival mode.



# The Paradigm Shift: Introducing the "Layer 3" Revolution

	<b>Layer 1 (The Macro Authority)</b>	<b>Layer 2 (The Developmental Capital)</b>	<b>Layer 3 (The CNTE Innovation)</b>
<b>Identity</b>	Government Institutions & Hospitals	NGOs & Development Partners	Community-Based Execution Infrastructure
<b>Function</b>	Policy & highly reactive mandates.	Programmatic interventions.	Hyper-local, data-driven, continuous delivery.
<b>Reach</b>	Distant / Centralized.	Fragmented / Variable.	Mass scalable access directly embedded in households.

The breakthrough is infrastructural: CNTE bridges the gap between massive developmental capital (Layer 2) and the excluded, unstructured community base.

# The Architecture of CNTE: A 4-Engine System

**Human Capital (CCLM):**  
Community Learning Zones  
recovering out-of-school youth.

**Health & Environment (CCHM):**  
A proactive catchment net  
preventing clinical emergencies.

## The University Advantage

Unlike NGOs, CNTE is anchored in a University.

This guarantees a continuous talent supply, structured certification, and built-in global internship mobility.

**CEPRES  
International  
University**

**Food & Agriculture (CSAM):**  
Converting subsistence farming  
into structured agribusiness.

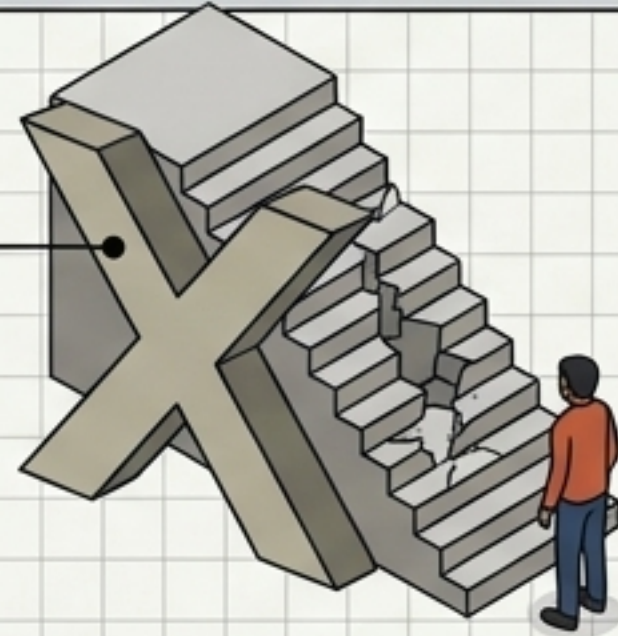
**Economic Scale (CBEM):**  
Escalating informal survival  
activities into profitable enterprises.

# Engine 1: Human Capital & Education Recovery (CCLM)

**Core Mechanic:** Bypassing rigid grade structures to capture out-of-school and over-age youth via competency-based foundational recovery.

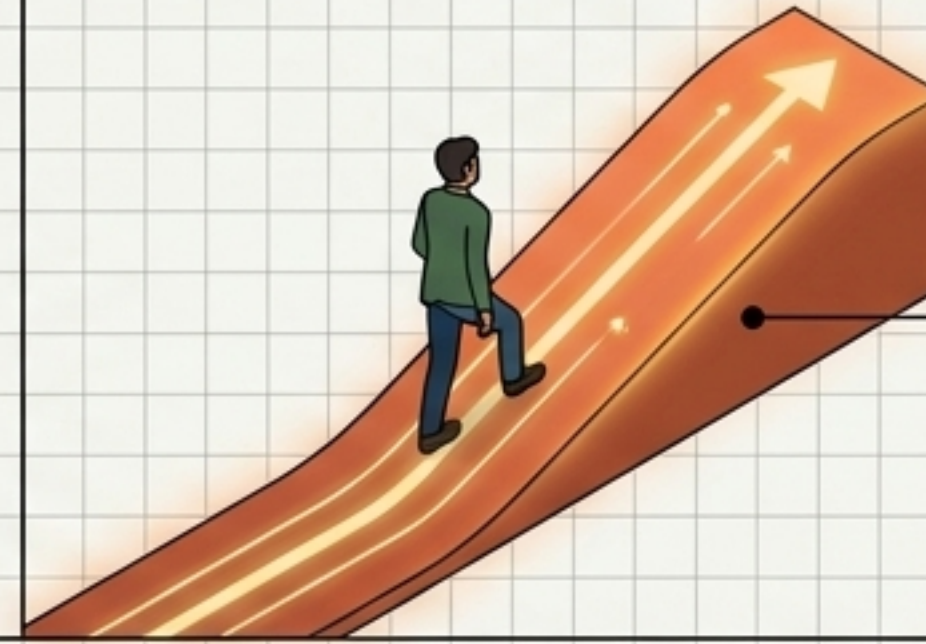
**Systemic Barrier:** Rigid Grade Structures

**Systemic Barrier:**  
Rigid Grade Structures



**Intervention Pathway:** Competency-Driven Progression

**Intervention Pathway:**  
Competency-Driven  
Progression

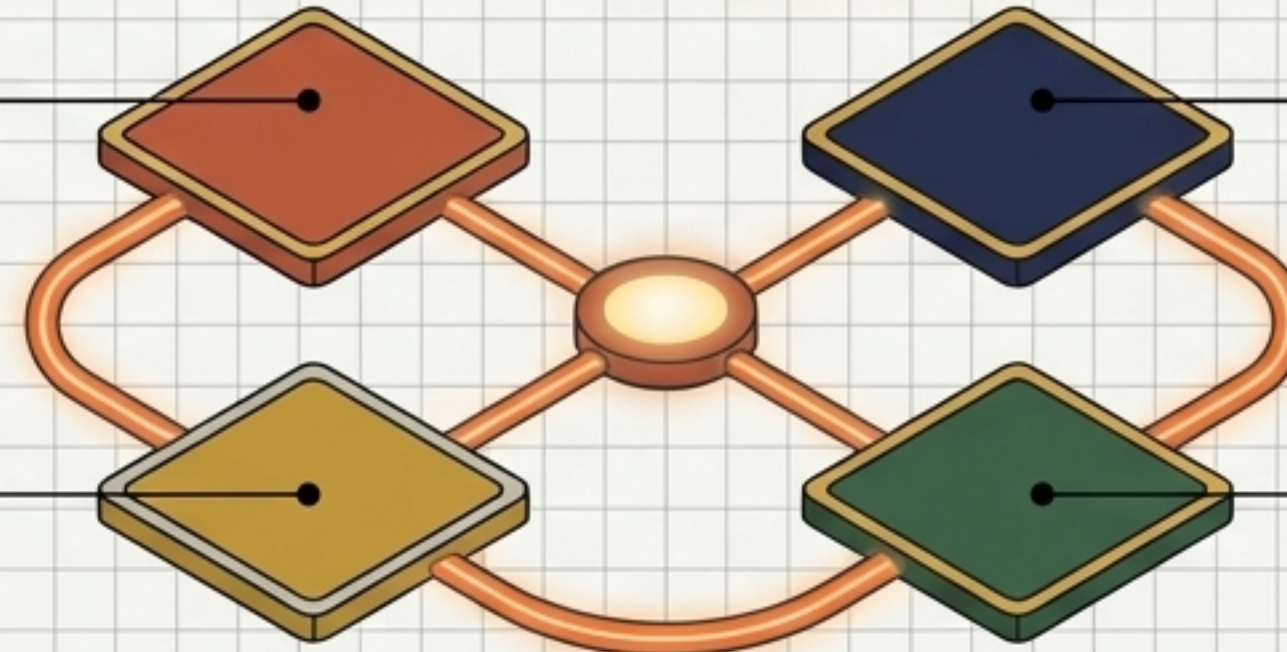


**Spatial Decentralization:**  
Utilizing existing community structures  
(churches, mosques) for zero-CaPex  
Learning Zones.

**Transition Pathway:**  
Designed specifically to reintegrate  
strengthened learners back into formal  
Government Layer 1 schools.

**Learning Passport:**  
Digital competency data tracking  
replacing age-based placement.

**Volunteer Teaching Corps:**  
Reciprocal labor model reducing  
delivery costs by 80%.



# Engine 2: Food & Agricultural Scale (CSAM)

**Core Mechanic:** The localized agricultural lifecycle moving households from subsistence dependency to structured commercial viability.

## Phase 1: Prevention (Resilience)

Soil health, climate adaptation, targeted seed selection.

## Phase 2: Production Support (Cultivation)

Advanced planting techniques via localized Volunteer Extension Corps.

## Phase 3: Stabilization (Risk Reduction)

Pest response, crop insurance linkages.

## Phase 4: Market Linkages (Post-Harvest)

Localized storage, aggregation, and direct market access.



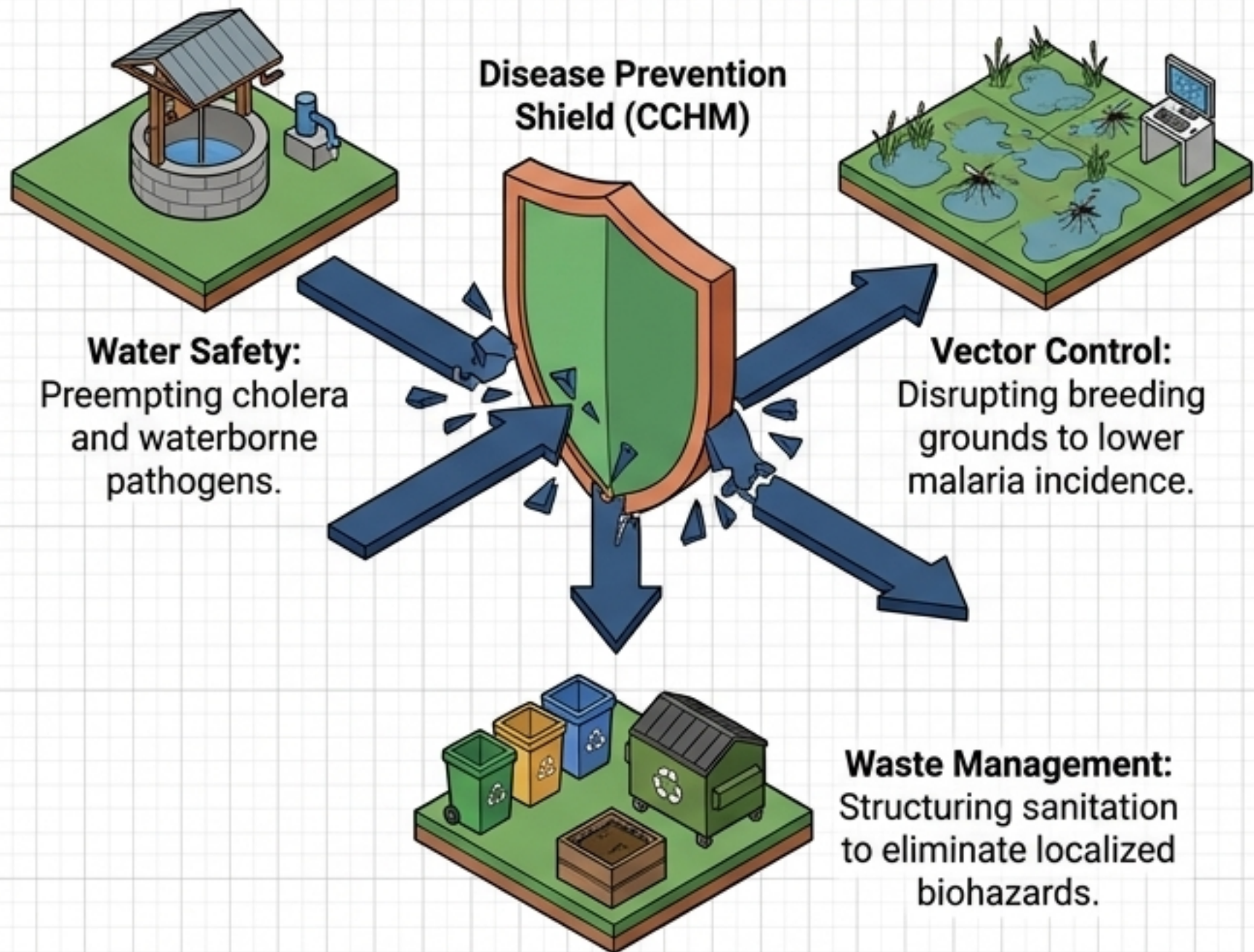
## Output Metric:

Documented potential for a **2x to 5x** increase in baseline crop yields.

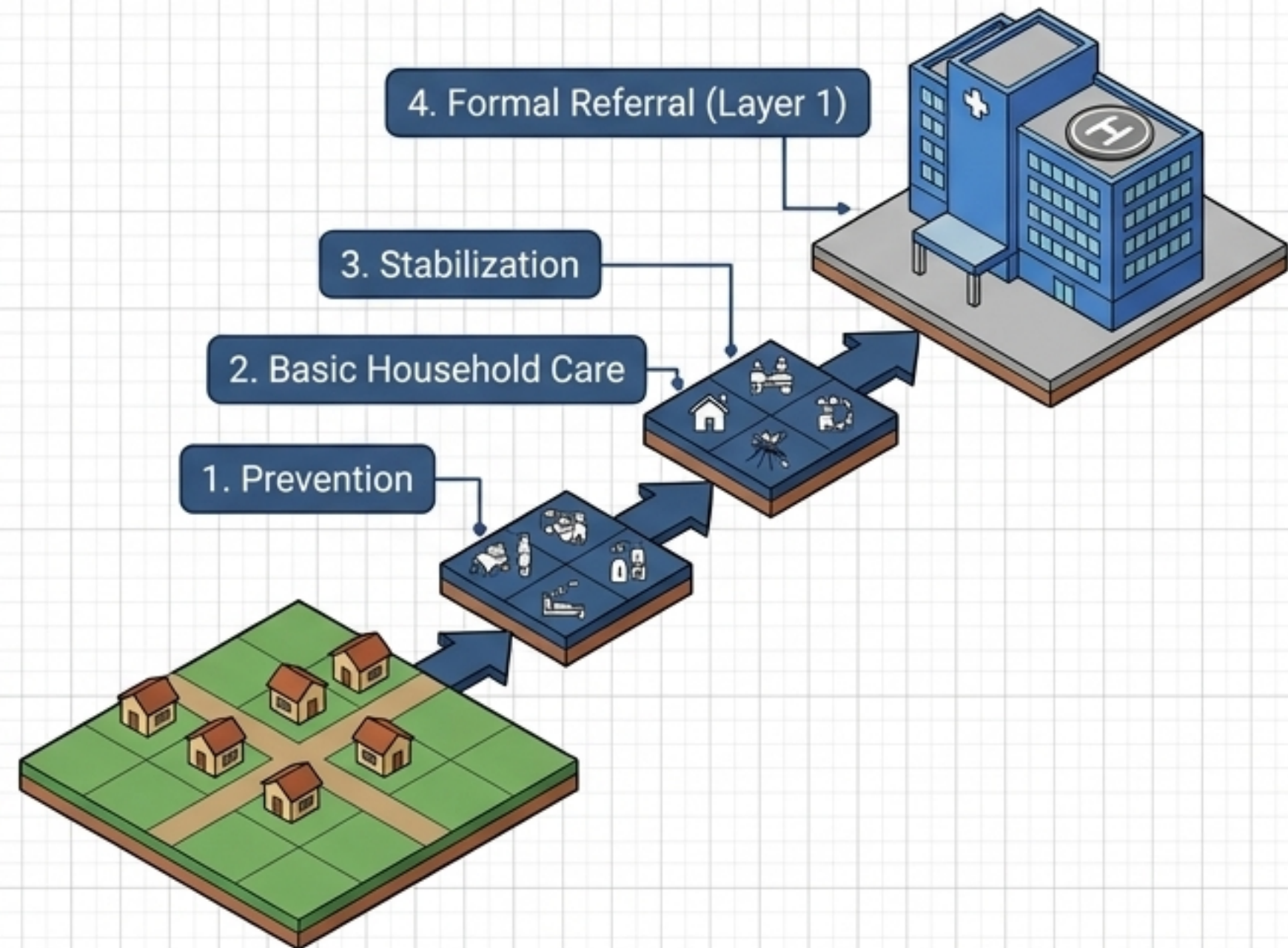
# Engine 3: Health & Environmental Defense (CCHM)

**Core Mechanic:** Deploying a proactive community catchment net that neutralizes environmental risks before they become late-stage clinical emergencies.

## Environmental Defense

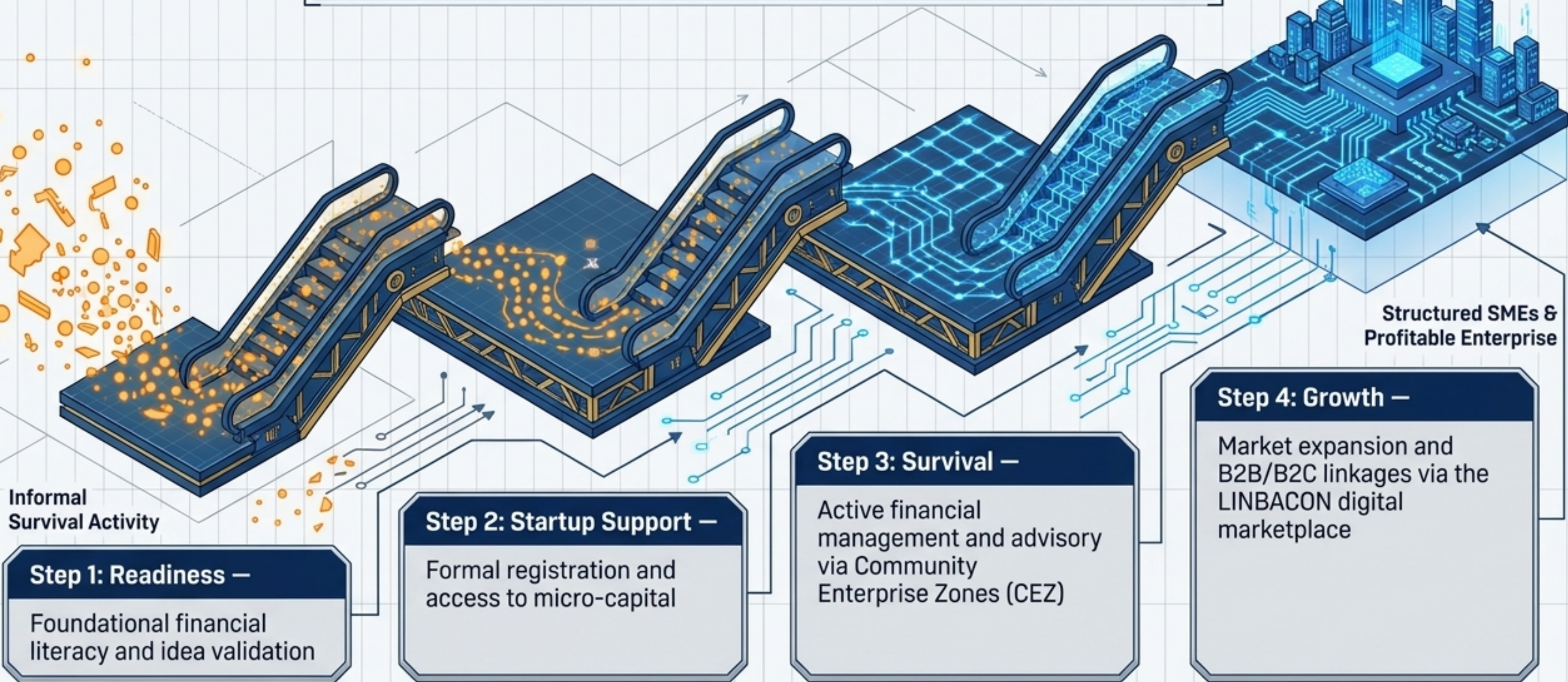


## The Continuum



# Engine 4: Enterprise & Economic Scale (CBEM)

**Core Mechanic:** An operational bridge converting informal survival activities into structured SMEs, solving structural, financial, capacity, and market chasms.



# The Synthesis: The Community Transformation Zone & The Flywheel

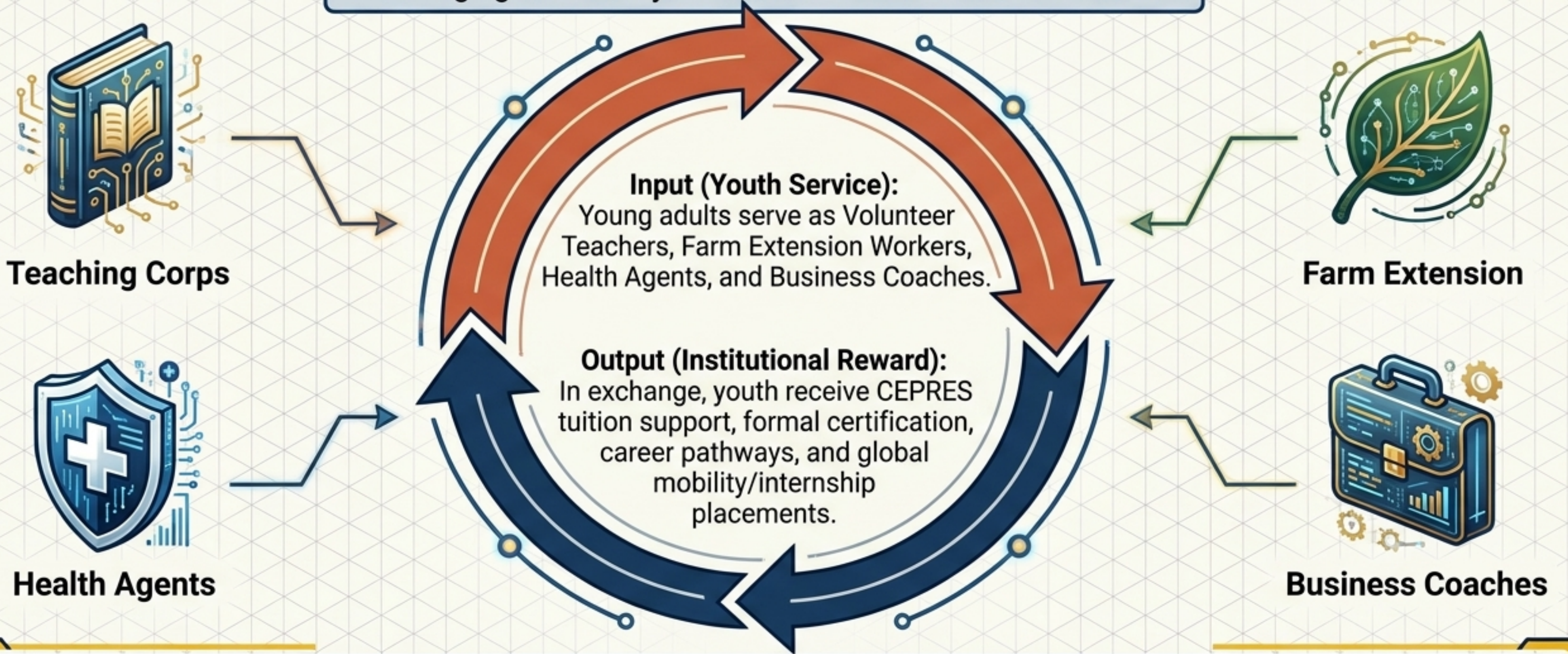


**The CTZ:** One interconnected execution hub per community replacing four fragmented NGO silos. Contains Learning, Agriculture, Health, and Enterprise Zones.



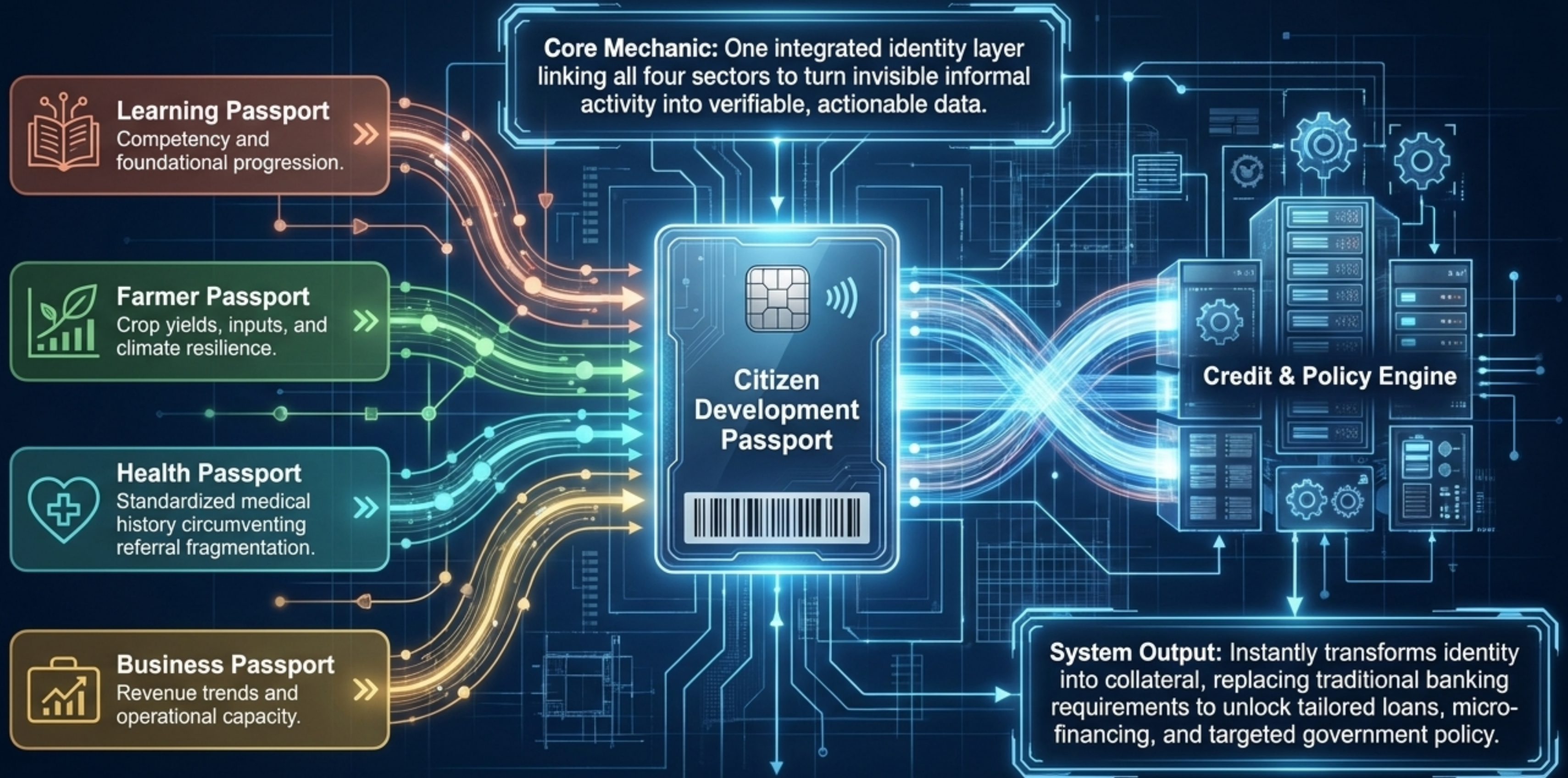
# The Human Engine: A Youth-Powered Reciprocal Labor Model

**Core Mechanic:** All systems share a unified workforce model, exchanging community service for institutional advancement.



**Impact Data Point:** This structure achieves **unprecedented scale**, reducing systemic delivery costs by up to **80%** compared to traditional employment models.

# The Digital Nervous System: The Citizen Development Passport (CDP)



# Disruptive Unit Economics

Hyper-efficient community investment prevents exponential downstream macroeconomic burdens.

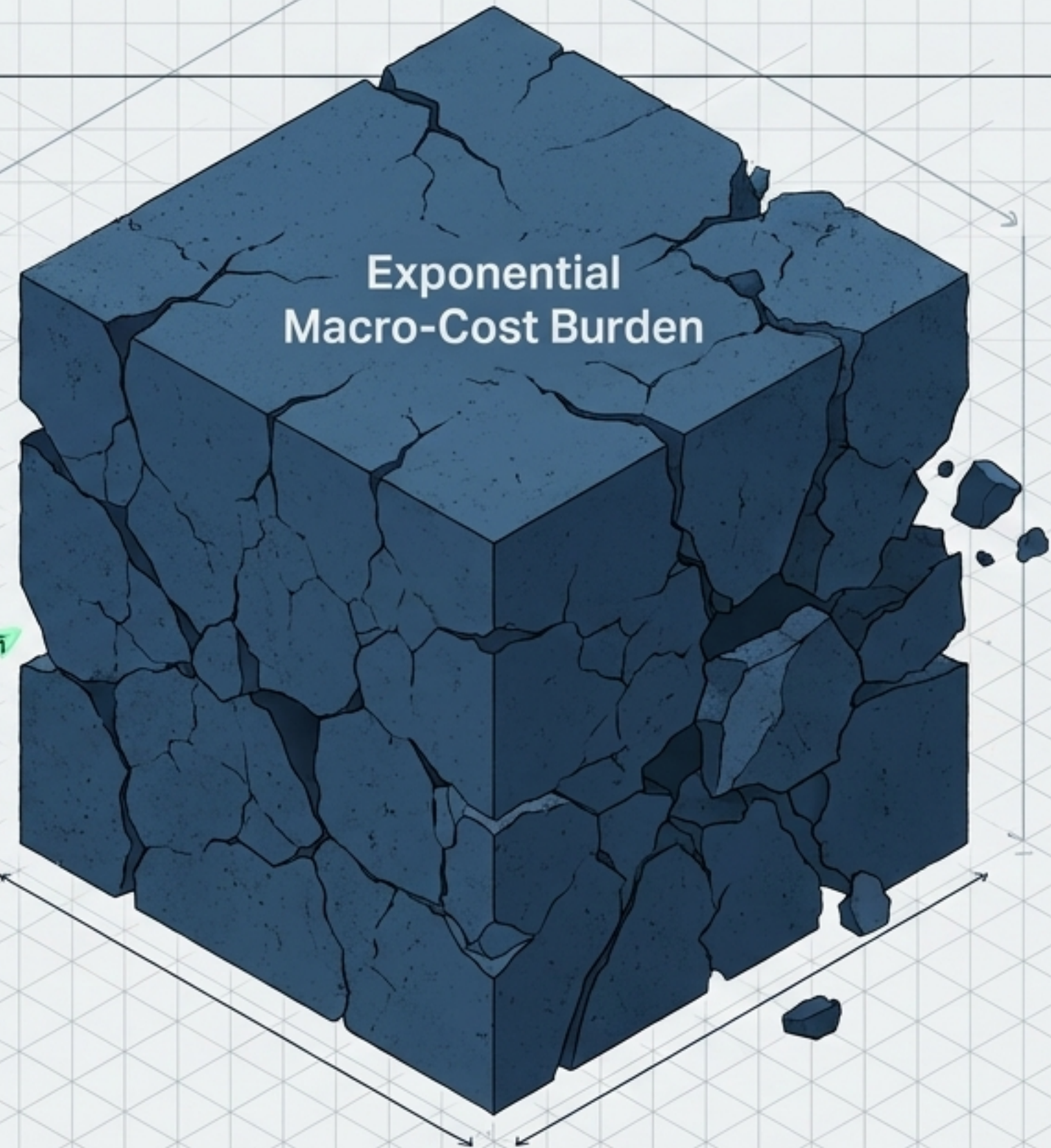
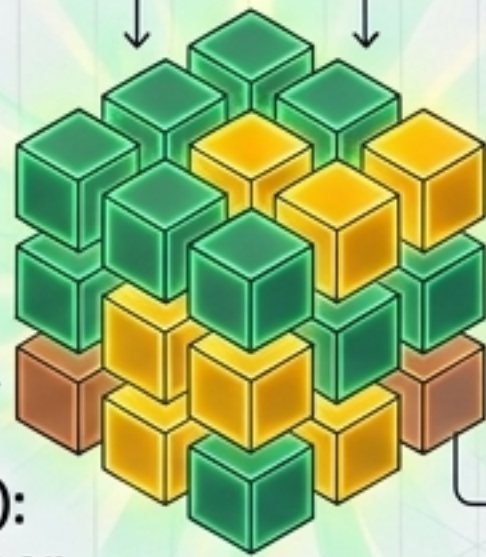
## The Micro-Cost Breakdown (Annual)

**Health (CCHM):**  
\$5 – \$60 per capita  
(Prevents catastrophic emergency clinical treatment).

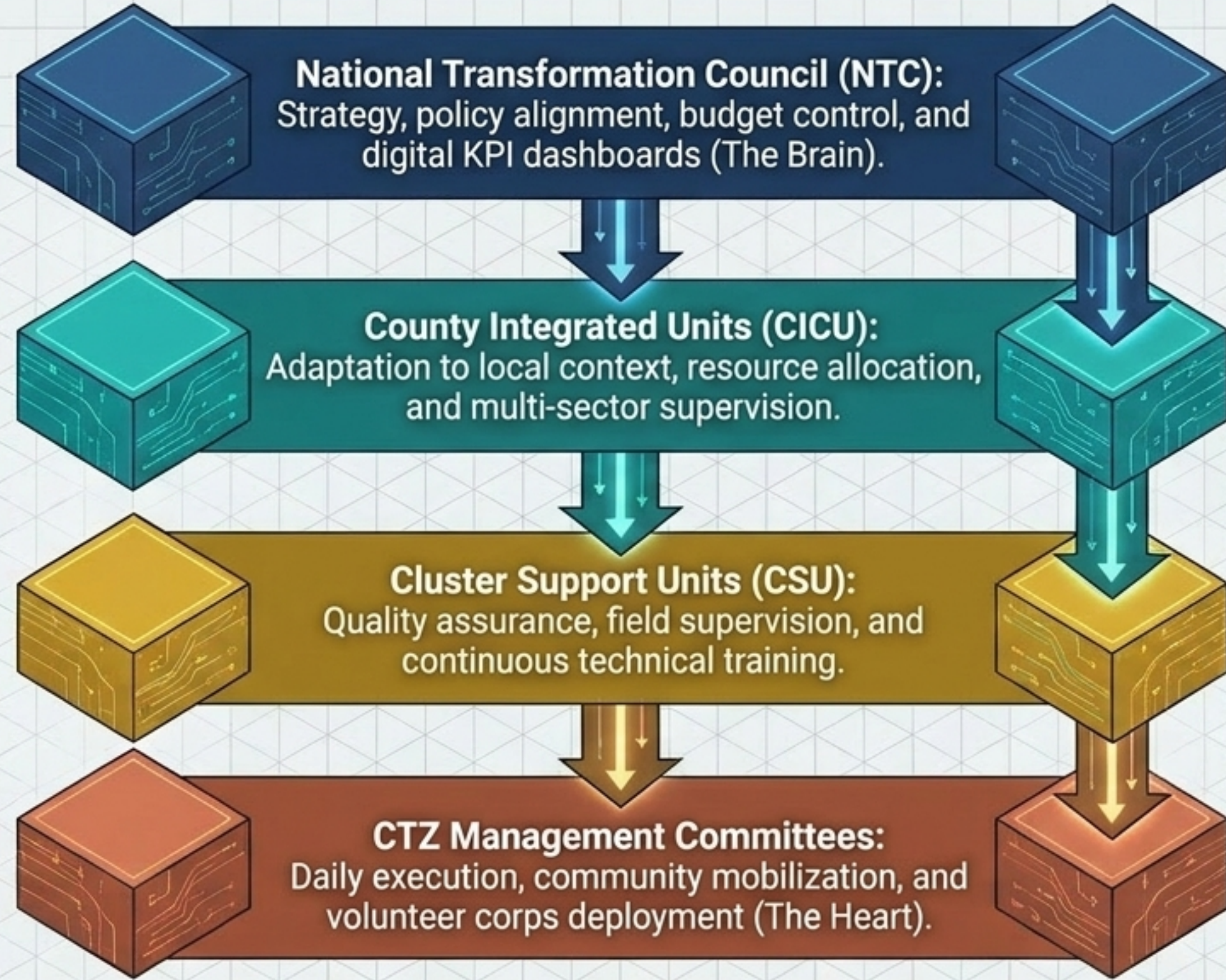
**Education (CCLM):**  
\$60 – \$80 per child  
(Prevents a lost generation of unemployable labor).

**Agriculture (CSAM):**  
\$10 – \$120 per farmer  
(Prevents national food insecurity and reliance on imports).

**Enterprise (CBEM):**  
\$20 – \$200 per business  
(Prevents high SME failure rates and macroeconomic stagnation).



# Governance Architecture: Centralized Intelligence, Decentralized Execution



This multi-level architecture guarantees scale without chaos, speed without loss of quality, and absolute data accountability.

# The Blueprint for Scale: A 5-Year National Rollout



## Phase 1: Pilot & Proof (Year 1)

- Launch integrated CTZ hubs in 2-3 high-potential counties. Target 5,000-10,000 direct beneficiaries.
- Focus on operational viability and baseline data capture.



## Phase 2: Regional Expansion (Years 2-3)

- Scale outward to 7 high-need counties.
- Full deployment of the Digital Passport (CDP) and LINBACON marketplace.
- Deep integration of financing networks.



## Phase 3: National System Integration (Years 4-5)

- Full deployment across all 15 counties (Target: 20,000+ enrolled children, nationwide agricultural resilience).
- Establish a fully structured, export-ready digital economy.

ARCMREALLIT SIE E. DAT9:ii  
DNSIRYSIONS O/8 Y.14

# Investment Vision: Capitalizing a National Paradigm Shift

## Year 1: \$300K – \$1M

(Pilot infrastructure, core digital CDP build, agent network expansion).

## Year 3: \$3M – \$5M

(County-level scaling, agribusiness aggregation networks, structural partnerships).

## Year 5: \$10M+

(National scale, fully self-sustaining digital economy and talent export pipeline).

**Revenue Streams:** Tuition, global internship placements, enterprise financing, and digital commerce fees.

We are not building a fragmented charitable program. We are engineering a national operating system that converts untapped human potential into scalable, global economic power.