

LONDON'S CHRISTMAS HIGHLIGHTS

Your guide for Christmas 2025



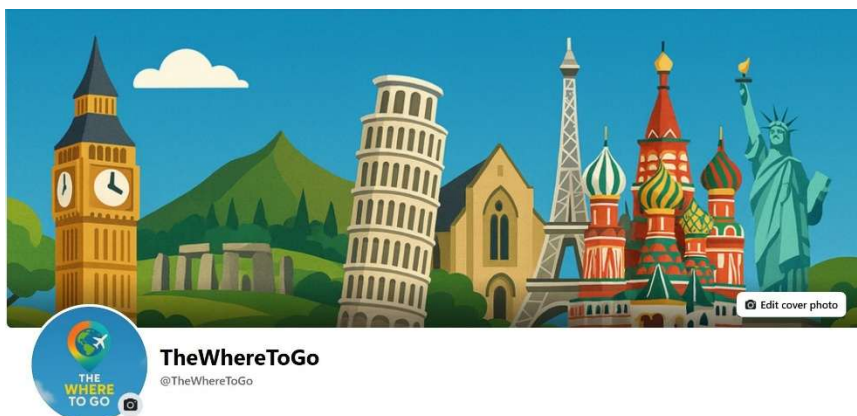
The inside cover for your information.....



This guide is London's Christmas Highlights is just one of a series of documentary travel guides under 'The Where To Go' banner. You can find a video of the places visited for this guide on my YouTube channel at www.youtube.com/@thewheretogo. Please feel free to like and subscribe.



You will also find up to date information about my worldwide travels on my dedicated Facebook page at www.facebook.com/TheWhereToGo.



It's Christmas time, and I've been checking out the London highlights to get you in the mood. I have even suggested an order to minimise your walking and heighten your enjoyment. The tour starts and ends at Bond Street Underground station which is accessible from the Central, Jubilee and Elizabeth lines. I have arranged the tour into a series of stopping off points where you can admire the view and take some photographs. You can add these places to Apple Maps or Google Maps to get yourself from one place to the next. Alternatively, I have created a route map and included it at the end of this guide. Experience the tour, enjoy your Christmas and all the very best for the New Year.

Christmas highlights

Bond Street Station

Selfridges, Oxford Street

Mayfair

Mercato Mayfair

The Chancery Rosewood

Biltmore Hotel

Connaught Hotel

Annabel's, Berkely Square

New Bond Street

Chanel

Dior

Cartier

Ralph Lauren

Burlington Arcade

Fortnum & Mason, Piccadilly

Piccadilly Circus

Regent Street

Hamleys, Regent Street

Carnaby Street

Liberty, Regent Street

Oxford Circus

John Lewis, Oxford Street

Bond Street Station

Christmas highlights



Bond Street Station

Bond Street Underground station seems like a good starting point as it central to many of the highlights and convenient for the Central, Jubilee and Elizabeth lines. Not much festive cheer in the station itself and not much better when you get outside into Oxford Street as the decorations at this end of the street seem to be somewhat sparse. Nonetheless, there is a real treat up the road so make your way to Selfridges which is always a popular starting point as you will appreciate when you hit the crowds.



Selfridges, Oxford Street



In 2025 Selfridges has gone full-Disney. The Oxford Street flagship is clad in a bespoke façade with three dimensional 'Disney Castle', and a light-and-music show every 15 minutes from 5.00pm and 9.00pm. The twelve windows reimagine classic Disney tales with painted sets ranging from Cinderella to Peter Pan and Pinocchio to Mary Poppins. Inside the store is a whimsical wonderland and a great place to start your tour if you don't mind the crowds.





Mayfair

The streets of Mayfair are heavily decorated for Christmas with canopy-style lights and shopfronts dressed up with wreaths and garlands. Walking through Mayfair offers a proper Christmas-card vibes with festive displays in shop windows and luxury-retailer storefronts which aim to compete with one another. On top of all that there are the restaurants and hotels offering their own definition of Christmas cheer.....

Mercato Mayfair

My own recommendations would include the Mercato Mayfair which is operated as a food hall by Mercato Metropolitano. This was originally St Mark's Church which was deconsecrated in 1974 and was included on the English Heritage's list of 'Buildings at Risk' register for over 20 years. The venue was eventually saved and turned into a food hall. Be warned that the venue gets terribly busy but is worth a visit to see the vaulted basement crypt, the amazing roof terrace and say you dined out in Mayfair.



Beyond the Mercato Mayfair, you may want to look at the Chancery Rosewood, the Biltmore Hotel and the Connaught Hotel (in that order) as they lead you to our next destination.



The Chancery Rosewood

The recently opened Chancery Rosewood is an extremely upmarket hotel whose building was once the American Embassy building and still has the American Eagle on the roof to prove it. The queues outside the place would suggest that this is definitely the place to enjoy a luxurious Christmas, and the festive atmosphere feels curated, not forced. Warm lighting, refined decorations and impeccable service make it a good place to go to escape the Christmas rush.

In previous years, Grosvenor Square has been home to the Ever After Garden, an illuminated installation designed as a garden of remembrance. However, with the square currently closed the Ever After Garden has moved moving to the Duke of York Square in Chelsea for 2025.



The Biltmore Hotel

The Biltmore Hotel started life in the early 1700s as a private residence. It opened as the Britannia Hotel under the Grand Metropolitan Hotels group and now operates independently as the Biltmore Mayfair. I have always wondered at the decorations so thought I might mention it this time. Inside, the lobby feels like a festive stage set, and the whole place carries that celebratory energy that makes December feel unmistakably high-end and unmistakably London.



The Connaught Hotel

The Connaught Hotel keeps Christmas classy. Its iconic Christmas tree outside is has baubles with people's faces on them which looks quite frightening unless you have ever fancied your face on a bauble. There's also the pond with the trees festooned in Christmas lights. Inside the hotel it is subtle elegance and impeccable hospitality. It captures the season's warmth and Mayfair's festive spirit.



Annabel's, Berkely Square

Annabel's is a prestigious private members club founded in 1963 which has long been an emblem of unparalleled opulence in the heart of Mayfair. This year, Annabel's has adopted a Narnia-inspired theme for Christmas and transformed its Grade I listed Georgian entrance into 'The Wardrobe: A World of Wonder,' which is one of the more theatrical festive displays in London this season. The facade supports The Caring Family Foundation's 'Food from the Heart' campaign.



Nothing much else to see in Berkeley Square other than some hanging lights in the trees which do look quite Christmassy so our next stop in Bond Street ...well actually New Bond Street because there is no such place in London as Bond Street, just Old Bond Street and New Bond Streetthe monopoly board got it wrong!!!!

New Bond Street



The display in New Bond Street's draws inspiration from the crown jewels so think crowns, pearls and tiaras supported by approximately 93,000 energy-efficient LEDs strung above the street. The display continues the street's legacy of luxurious elegance supported by the likes of Chanel, Dior, Cartier and Ralph Laren which you can visit in that order. As usual, the overall effect is one of sheer opulence and refinement, making window shopping here a truly glamorous affair and reinforcing the area's status as a premier luxury destination. You might want to take a look inside the Givenchy window which, for some inexplicable reason at the time of my visit included not a shred of evidence of anything to do with Christmas.... bah humbug!!!

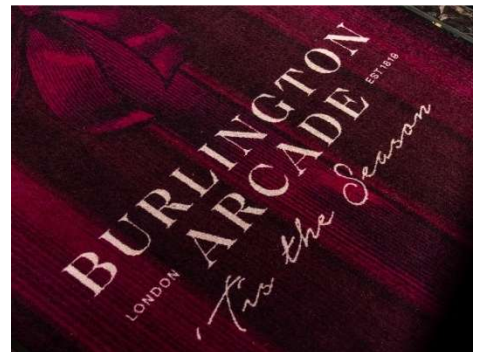




Burlington Arcade



Next stop is the Burlington Arcade which opened on 20 March 1819 and was designed to create an elegant, covered walkway where genteel Londoners (especially women) could shop away from the dirt and dangers of busy open streets. The 2025 Christmas theme, which was recently unveiled is the '12 Days of Christmas' featuring scenes inspired by the song. As we head towards Picadilly, this is definitely the best direction to be going as the displays are in order and, from this end, we start the partridge in a pear tree to and continue through towhat did my true love send to me on the 12th day of Christmas?





Fortnum & Mason



Fortnum & Mason is a legendary London institution, founded in 1707 by a footman from Queen Anne’s household who began selling discarded palace candles. Over the centuries it grew into a luxury emporium — famous for fine foods, teas, luxury hampers, preserves, chocolates, and high-end gifts as well as an annual Christmas presentation. The outside looks similar to the 2024 advent calendar design although the year has been changed from 2024 to 2025. The window displays have changed and, this year, features love birds, prancing unicorns and a lion bearing gifts as well as Fortnum’s unmistakable brigade of mousey redcoats.



Piccadilly Circus

The Piccadilly lights are an extension of those to be seen in Regent Street alongside the usual display of billboard advertising everything Christmas and not Christmas. There not too much to see other than a deluge of open top buses taking visitors on the same tour as us but without the walking.



Regent Street

Regent Street provides its hallmark 'Spirit of Christmas' angels, which are made from low-energy LED lights hovering above the street and creating a dazzling canopy above the sweeping curve of the street. The display includes approximately 300,000 LEDs I didn't count them, but I did do my research!!! The design honours the installation's historic heritage and remains a quintessential and breathtaking centrepiece of London's festive season, symbolising the grandeur and history of the capital's Christmas celebrations.



Hamleys

Hamleys on Regent Street is widely regarded as the oldest toy shop in the world and dates back to 1760 when Christmas was simpler, quieter and far less commercial than it is nowadays. This flagship store features seven floors of toys, games and novelties so probably not the place to bring your young children unless you tell them that Santa Claus does not shop at Hamleys. This year Hamleys have dispensed with their usual traditional presentation, and the 2025 windows are themed around 'Beanie Bouncers' which are described as plush toys with big eyes and soft bodies.... I have never heard of them either until now.



Carnaby Street

I was particularly impressed with Carnaby Street last year and quite enjoyed the colourful look under the theme 'All is Bright' with six-metre-long forms made of around 60,000 LEDs hanging over the pedestrian street. The design was creative and contemporary than traditional and Christmassy, but it worked. Unfortunately, this year's offering is a little less impressive and I shall leave it up to you, on the basis of the evidence to decide whether to visit or not because there are still some nice shops to explore.

Liberty

A short distance from Carnaby Street is Liberty who are celebrating their 150th-anniversary year, The 2025 Christmas Shop is an immersive experience and now open on the fourth floor. In addition, the Good Ship Liberty is definitely worth a look, and I particularly liked the liberty print sails.



Oxford Street

Back to Oxford Street now and the decorations around Oxford Circus looks a lot less sparse than those at the top end near Selfridges. The display, featuring about 5,000 white stars, is made up of approximately 300,000 low-energy LED bulbs, suspended above the street providing a canopy of twinkling stars. The lights are switched on from 4.00pm to midnight until early January so not much point coming in the middle of the night to avoid the rush. In 2025, the display doubles as a fundraiser supporting children at Great Ormond Street Hospital Charity.



John Lewis

Christmas would not be the same without the John Lewis Christmas advertisement to start of the festivities so it fitting to include John Lewis on our tour even though the store has not exactly gone out of its way to compete with some of the others. Nonetheless, we have some pretty blue lights to light up the street and the LEGO themed Santa's Enchanted Grotto which you will need to book in advance. I have included some pictures of their window displays, but I have absolutely no idea what the theme is.



Bond Street Station

Back to Bond Street Underground station and I hope you enjoyed the tour. Hope to see you again next year.



Walking Route

Bond Street to Selfridges

Exit Bond Street Underground Station onto Oxford Street and head west towards Marble Arch. Selfridges is approximately 500 yards up the road on the right-hand side but I doubt you can miss it.

Selfridges to Annabel's

At the Marble Arch end of Selfridges, cross the road and head south down North Audley Street. You will pass **Mercato Mayfair** on the left, then continue to the **Chancery Rosewood** overlooking Grosvenor Square. Walk along the southern edge of Grosvenor Square, keeping the park on your left. The **Biltmore Hotel** is on your right. Continue past the hotel and take the next right into Carlos Place. Follow this road down to the **Connaught Hotel**. Keep going straight as Carlos Place becomes Mount Street. Continue walking until the road opens out into Berkeley Square. Turn right and Annabel's is on your right-hand side overlooking Berkeley Square on your left.

Annabel's to New Bond Street

From Annabel's you need to cross the park and leave Berkeley Square via Bruton Street although at night you will probably have to walk around the park to the opposite side. Walk along Bruton Street for 175 yards and turn left into New Bond Street. Further up this road you will pass **Chanel, Dior, Cartier** and **Ralph Lauren** in that order.

New Bond Street to Fortnum & Mason

Turn left at Ralph Lauren and walk to the Burlington Arcade which is a short distance on your right-hand side. Walk through **Burlington Arcade** and exit onto Piccadilly. Fortnum & Mason is immediately to your left on the opposite side of the road.

Fortnum & Mason to Hamleys

Continue up Piccadilly towards Piccadilly Circus passing St James Church on your right. At Piccadilly Circus take your time to admire the view and bear left onto Regent Street. Walk up Regent Street for approximately 700 yards. Hamleys is on the right-hand side.

Hamleys to Liberty's

Immediately after Hamleys, turn right into Foubert's Place which leads directly to **Carnaby Street**. Turn left into Kingly Street and then right onto Great Marlborough Street where you will find Liberty's on your right-hand side.

Liberty's to Bond Street via John Lewis

Cross the road and head up Argyll Street passing the London Palladium on your right-hand side. Turn left into Oxford Street and proceed up Oxford Street to John Lewis which is 175 yards on the right and Bond Street Underground Station which is a further 175 yards on the left.

Total distance is approximately 3.0 miles/4.8 kilometres
Total walking time around 1.5 hours and 3.0 hours with stops

The outside cover if you enjoyed this guide.....



This guide is just one of a growing series of documentary travel guides collated under 'The Where To Go' banner. The following titles are presently available or coming really soon.....

