

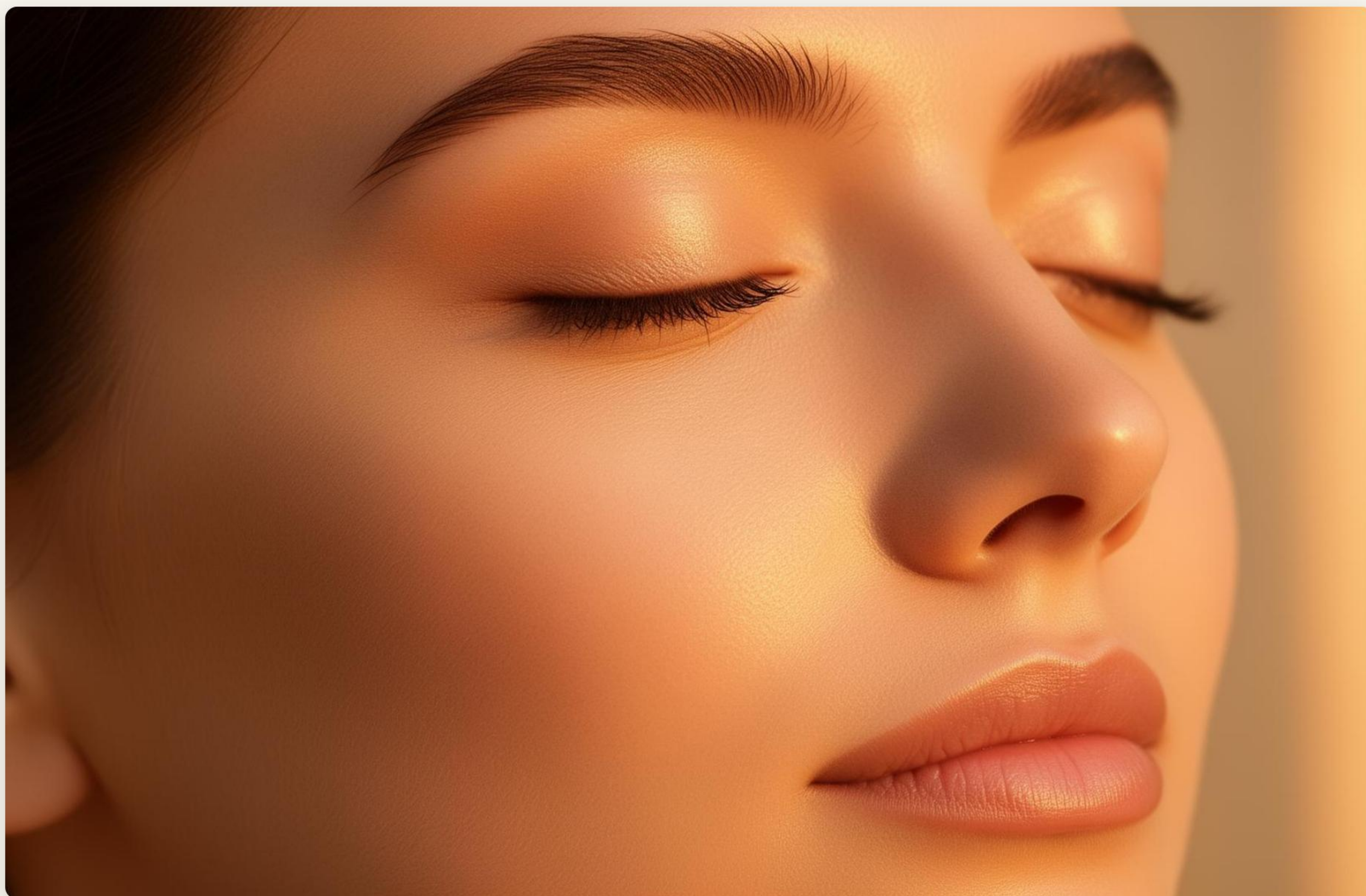
# Understanding Hyperpigmentation

---

A Patient Guide to Dark Spots, Uneven Skin Tone, and Treatment Options

# What is Hyperpigmentation?

Hyperpigmentation occurs when excess melanin production causes certain areas of the skin to appear darker than surrounding skin. This can be caused by various environmental and biological triggers.



✓ Sun Spots

✓ Melasma

✓ Post-Inflammatory Hyperpigmentation

✓ Age Spots

# Common Causes



## Sun Exposure

UV exposure is the primary driver that stimulates melanin production and contributes to dark spots.



## Inflammation

Acne, irritation, and skin injury can trigger post-inflammatory hyperpigmentation.



## Hormonal Factors

Hormonal fluctuations may contribute to melasma and uneven skin tone.

# Who is Most Affected?

Hyperpigmentation can affect all skin types but is often more noticeable in medium to deeper skin tones due to higher melanin activity.

## Key Factors:

- Skin Type & Genetics
- Hormonal Fluctuations
- Chronic Sun Exposure
- Inflammatory Skin Conditions

000 × 400

# Professional Treatment Approaches



Professional treatment plans may include a combination of medical-grade skincare, chemical peels, microneedling, and laser-based therapies based on individual skin needs.

- 
- ✓ Medical-Grade Skincare
  - ✓ Chemical Peels
  - ✓ Microneedling
  - ✓ Targeted Laser Therapy
  - ✓ Daily Sun Protection

# Daily Habits Support Results



## Morning Routine

Gentle Cleanser • Antioxidant Serum •  
Vitamin C • Broad-Spectrum SPF 30+

## Evening Routine

Gentle Cleanser • Treatment Products •  
Moisturizer • Follow Provider  
Recommendations

# Protect Your Skin Every Day

Consistent sun protection is one of the most effective ways to prevent existing pigmentation from worsening and reduce recurrence after treatment.

## Daily Checklist:

- ✓ Daily SPF 30+ Application
- ✓ Reapply Sunscreen Every 2 Hours
- ✓ Wear Protective Clothing
- ✓ Seek Shade During Peak Hours
- ✓ Treat Acne Early



# The Serenatti Content System

Custom-Branded Patient Education Systems

- ✓ Branded Patient Guides
- ✓ Consultation Support Materials
- ✓ Treatment Aftercare Resources
- ✓ Social Media Education Content
- ✓ Website Education Libraries
- ✓ Authority Content Systems

[Mockup: Desktop View]

[Mockup: Tablet View]

[Mockup: Mobile View]

# Your Personalized Treatment Plan Starts Here

Hyperpigmentation is treatable. A professional consultation can help identify the underlying cause and determine the most appropriate treatment strategy for your unique skin.



[SCHEDULE YOUR CONSULTATION](#)

# Image Sources



<https://auraslclinic.com/assets/hero-skin-DZtkHcoQ.jpg>

Source: [auraslclinic.com](https://auraslclinic.com)

---



[https://enrichedmedspa.com/wp-content/uploads/2026/05/1778585050305\\_Clinician-consulting-client-in-tranquil-med-spa-room-1.jpeg](https://enrichedmedspa.com/wp-content/uploads/2026/05/1778585050305_Clinician-consulting-client-in-tranquil-med-spa-room-1.jpeg)

Source: [enrichedmedspa.com](https://enrichedmedspa.com)

---



<https://static.vecteezy.com/system/resources/thumbnails/074/318/308/small/elegant-skincare-product-collection-with-marble-texture-for-luxury-beauty-advertising-photo.jpg>

Source: [www.vecteezy.com](https://www.vecteezy.com)

---



[https://smytten.com/rizzlife/\\_next/image?url=https%3A%2F%2Fd1m97rp2nin.cloudfront.net%2Fprodin%2Fsmyttenaffiliate%2Fblogimages%2Fwhy-higher-spf-is-crucial-for-indian-sun-exposure-an-faq-2e76dca7-22cc-40d3-b64a-5face6a121f0.webp&w=3840&q=75](https://smytten.com/rizzlife/_next/image?url=https%3A%2F%2Fd1m97rp2nin.cloudfront.net%2Fprodin%2Fsmyttenaffiliate%2Fblogimages%2Fwhy-higher-spf-is-crucial-for-indian-sun-exposure-an-faq-2e76dca7-22cc-40d3-b64a-5face6a121f0.webp&w=3840&q=75)

Source: [smytten.com](https://smytten.com)