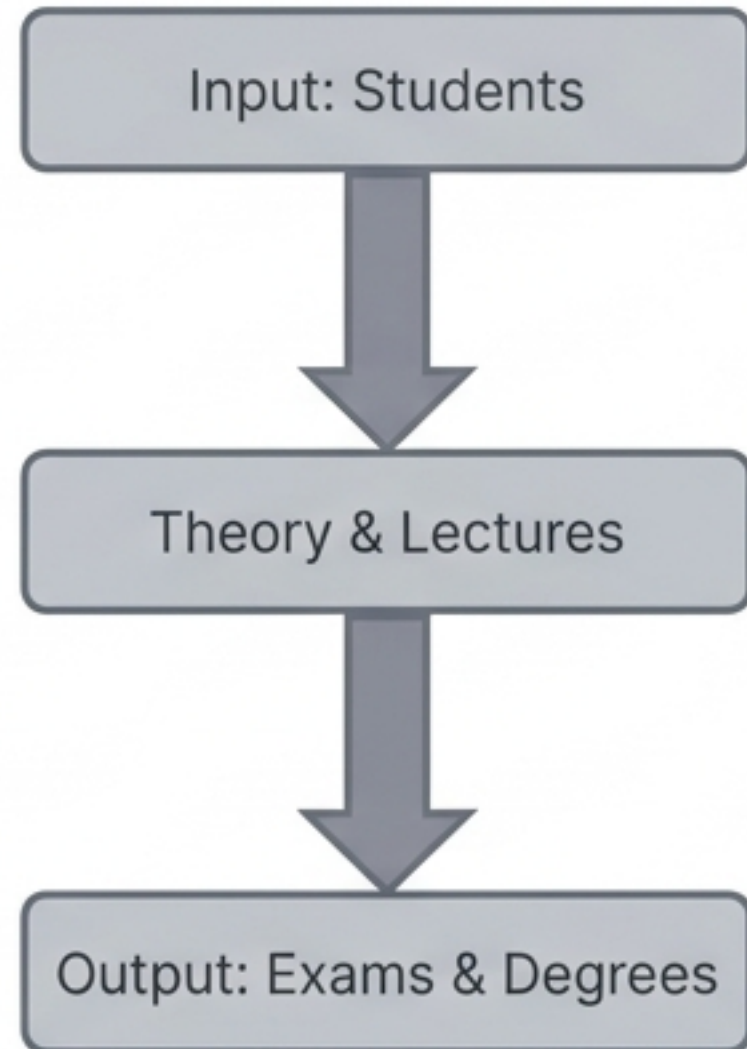


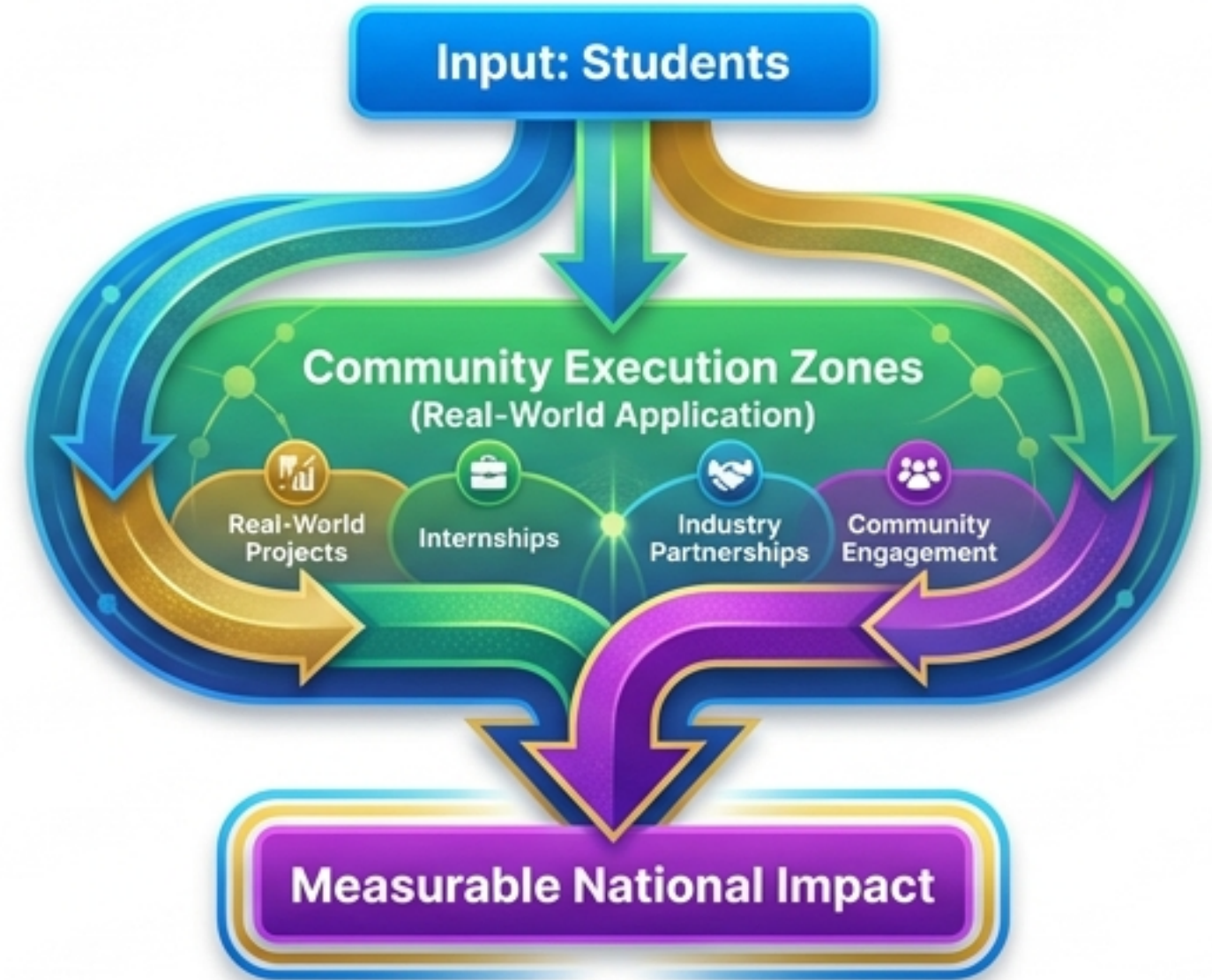
Every Course Has a Field Function: The **CEPRES** **Course-to-CNTE** **Mapping** Matrix

Transforming the curriculum into a national workforce engine

Traditional Curriculum

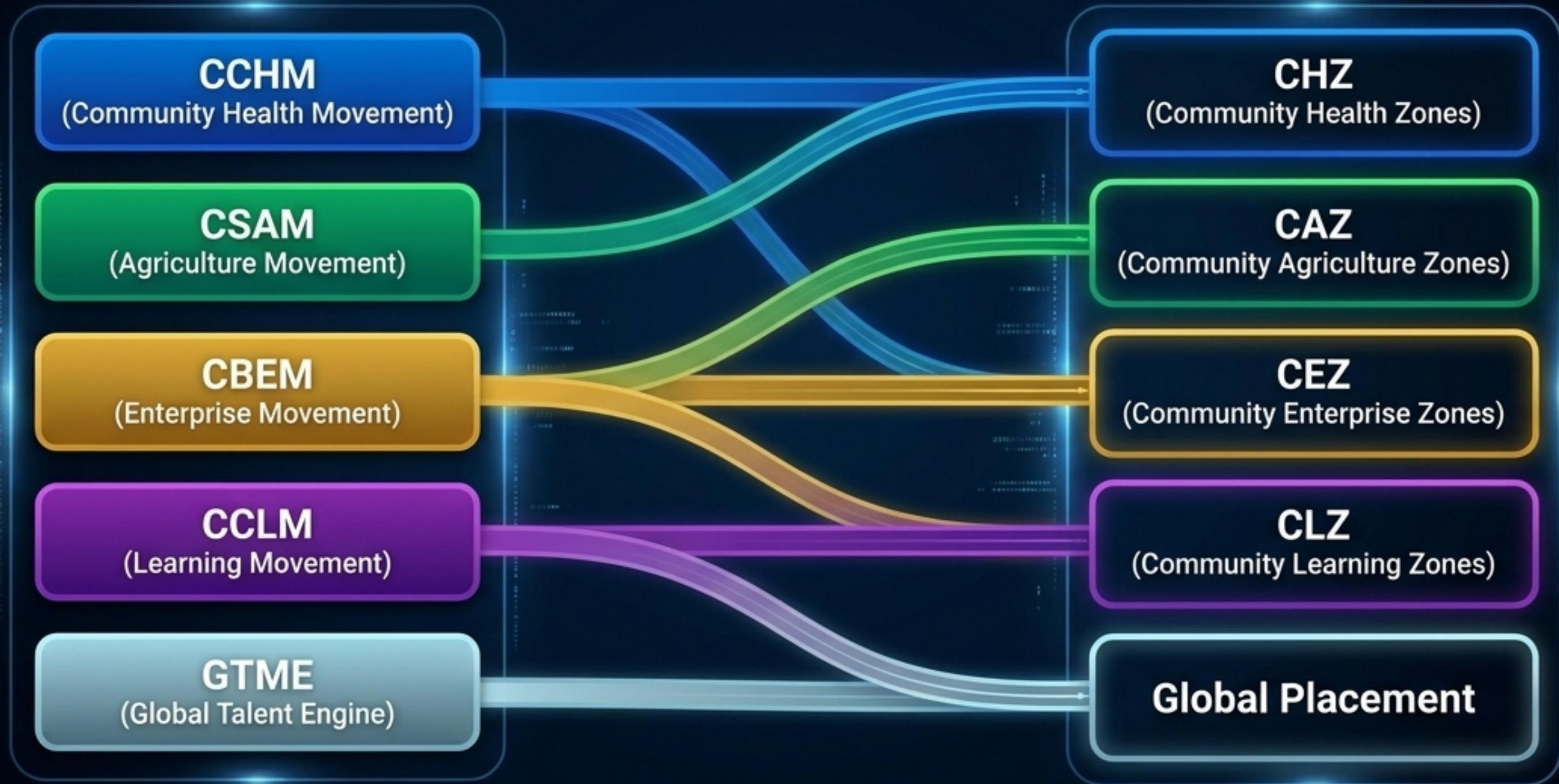


CNTE Framework



Learning is measured by real-world impact, not just theoretical recall.

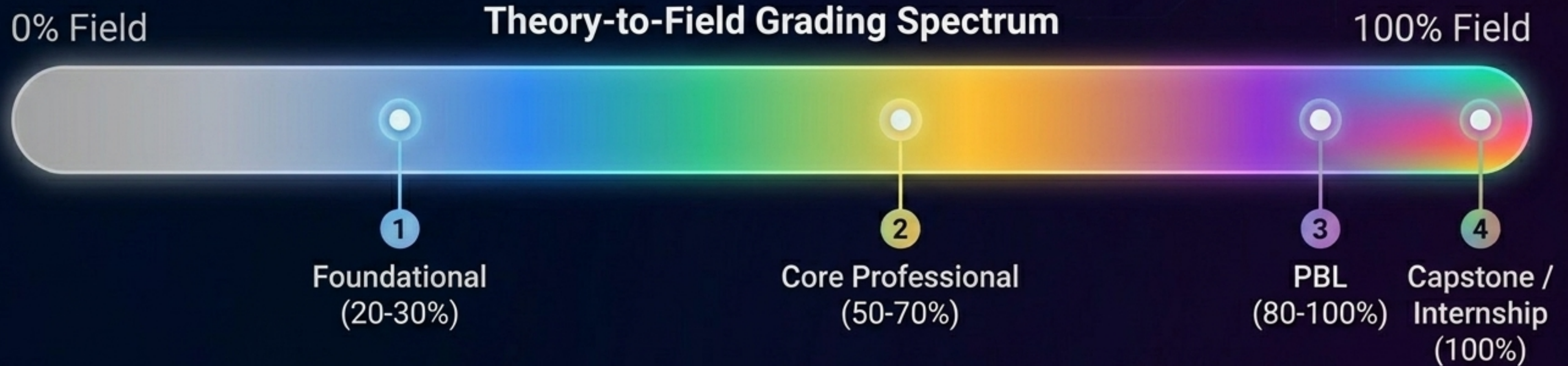
The CNTE Engine Architecture connects academic disciplines to execution zones



Academic categories map directly to specific field execution roles



Grading is measured through real-world implementation, not just theory



Diagnostic Example

Course: Community Health Assessment
30% Theory Exam
70% Field Work (Data collection, Community diagnosis, Report submission)

Four cross-cutting systems provide the operational infrastructure for all students



Public Health and Medical Tech operate as the Community Health Engine (CCHM)

Mapping Matrix

Course Cluster	CNTE Function	Student Field Role
Epidemiology	Disease surveillance	Track outbreaks
Biostatistics	Data analytics	Analyze CDP data
Environmental Health	Sanitation systems	Inspect communities
Lab Tech	Diagnostics	Blood analysis

OPERATING ENVIRONMENT:

Community Health Zones (CHZ)

Key Student Roles:

- Health Officers
- Lab Techs
- Data Analysts

Graded Outputs:

- Surveillance reports
- Diagnostic data

Agriculture and Environmental Science power the Community Agriculture Engine (CSAM)

Course Cluster	CNTE Function	Student Field Role
Soil Science	Soil health management	Soil testing
Crop Science	Production systems	Demonstration farms
Climate Science	Adaptation	Climate-smart farming
Env Science	Ecosystem protection	Environmental audits

OPERATING ENVIRONMENT:

Community Agriculture Zones (CAZ)

Key Student Roles:

- Extension Workers
- Farm Technicians
- Climate Advisors

Graded Outputs:

- Farm productivity reports
- Soil analysis
- Yield improvement data

Business, Administration, and Project Management drive the Enterprise Engine (CBEM)

Course Cluster	CNTE Function	Student Field Role
Entrepreneurship	Business creation	Launch SMEs
Accounting	Financial systems	Manage CTZ funds
Project Management	Execution	Run projects
Public Admin	Governance	Manage systems

OPERATING ENVIRONMENT:

Community Enterprise Zones (CEZ)

Key Student Roles:

- Business Dev Officers
- Financial Managers
- Project Coordinators

Graded Outputs:

- Business plans
- Financial reports
- Operational dashboards

Education programs construct and scale the Community Learning Engine (CCLM)

Course Cluster	CNTE Function	Student Field Role
Teaching Methods	Instruction delivery	Teach learners
Curriculum Studies	Program design	Develop training
Educational Psychology	Learner support	Assess students
Admin & Leadership	System management	Manage CLZ

OPERATING ENVIRONMENT:

Community Learning Zones (CLZ)

Key Student Roles:

- Community Teachers
- Learning Facilitators
- Education Coordinators

Graded Outputs:

- Learning assessments
- Teaching reports
- Literacy improvements

A standardized course coding system turns syllabi into deployable operational units

PUBH 201 -> [CCHM | Data Analysis | Community Report]

CNTE Engine Tag

Identifies the core engine function for alignment

Field Execution Role

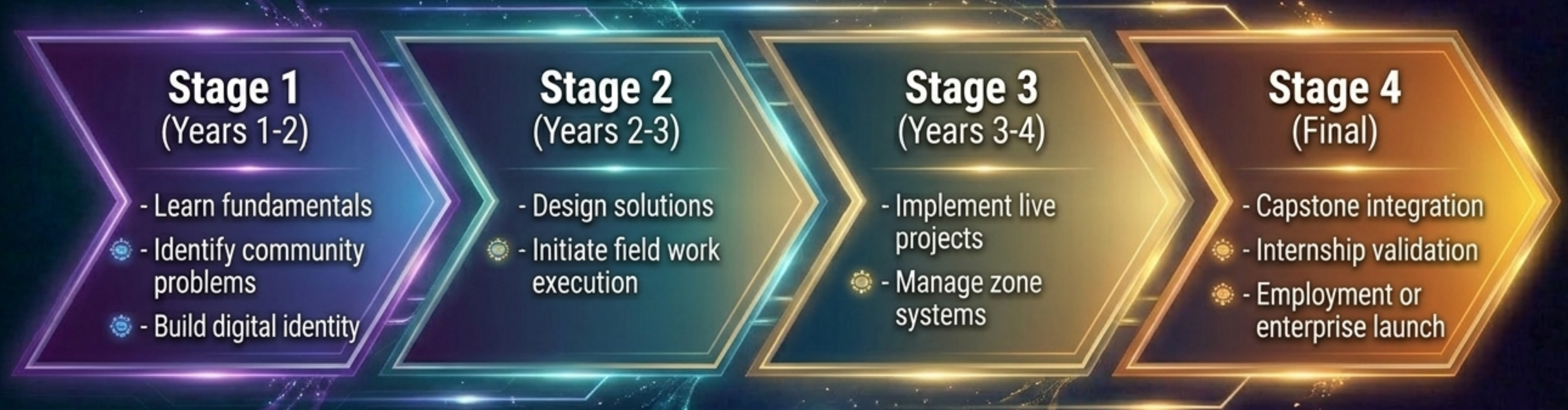
Defines the student's practical role in the field

Graded Output Type

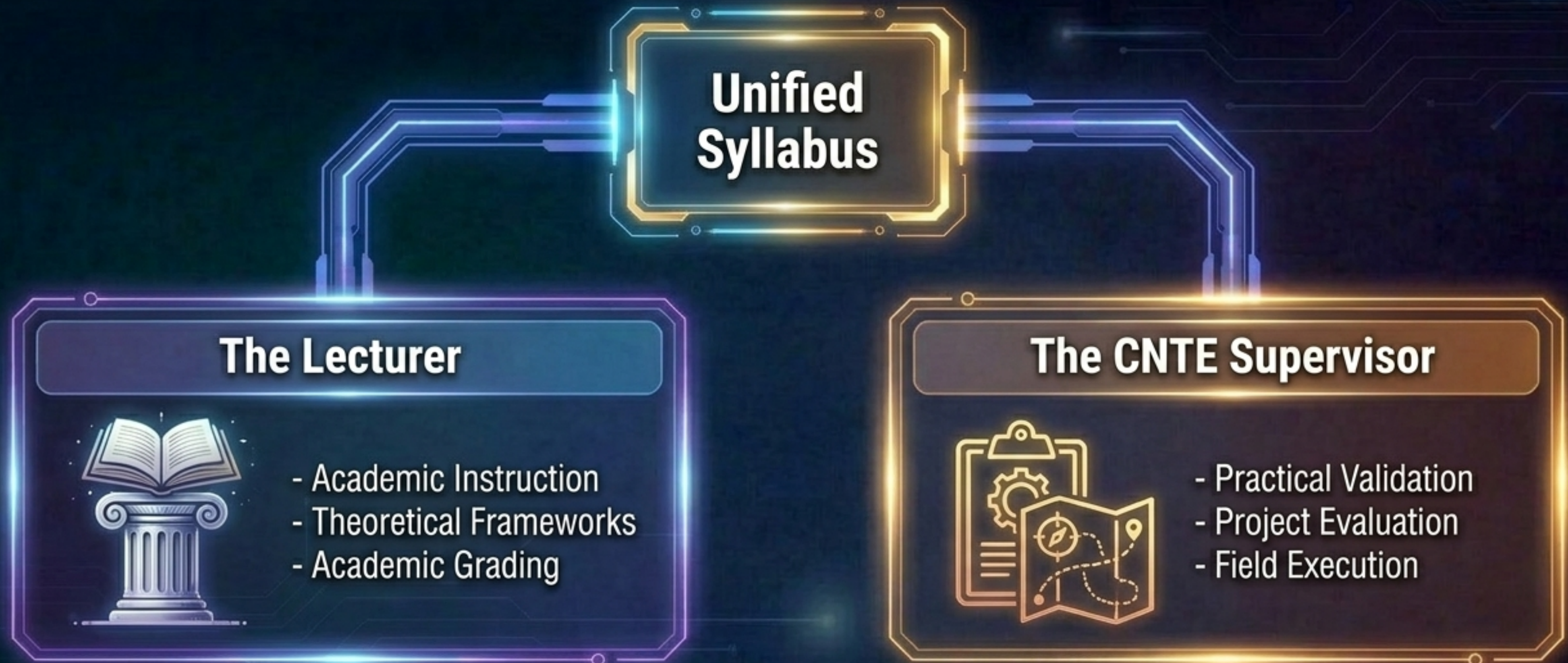
Specifies the final deliverable for assessment

Every course across all departments is tagged to ensure systemic alignment.

The student execution pipeline builds progressively toward systemic value



Faculty adopt a dual role to align academic theory with field validation



Faculty are no longer just instructors; they are operational managers of student field impact.

Every graduate leaves with a verified portfolio of systemic national impact



Students do not just earn a degree; they earn a record of execution.

Each department at CEPRES is a live operational unit executing national development.

Immediate Next Steps



Finalize granular department-by-department course mappings.



Deploy Excel tracking tool for administrative course-field linkages.



Ratify accreditation-ready academic policy documents.



Distribute faculty CNTE training and alignment manuals.